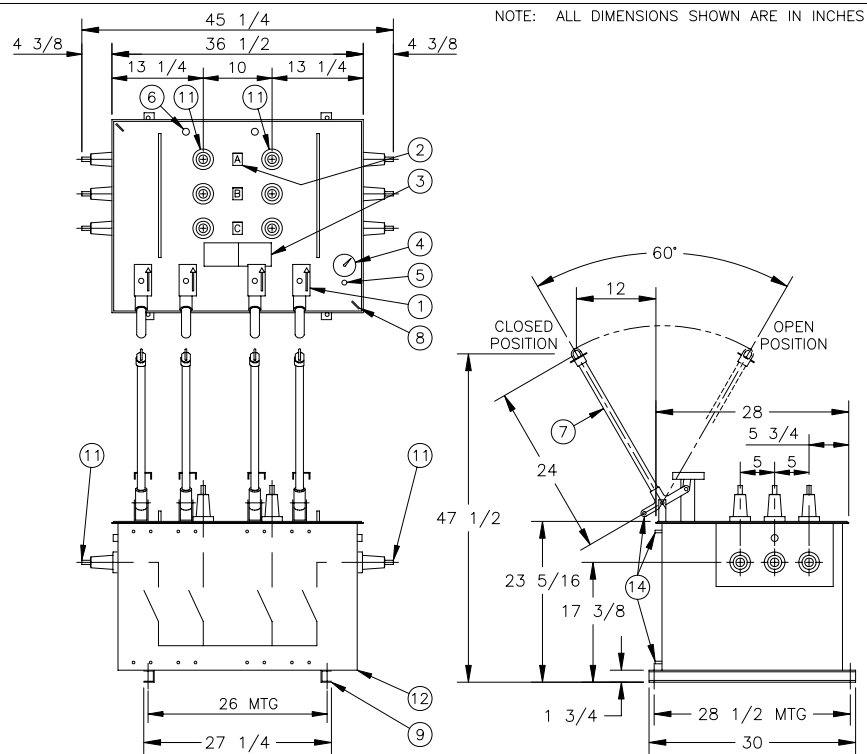


COMPONENT IDENTIFICATION		
ITEM	QTY	DESCRIPTION
1	4	CLOSED-OPEN POSITION INDICATORS WITH PADLOCK PROVISIONS
2	3	PHASE IDENTIFICATION TAGS
3	1	NAMEPLATE WITH RATINGS AND LINE DIAGRAM
4	1	COLOR CODED PRESSURE GAUGE
5	1	SF6 FILL VALVE (SWITCH FACTORY FILLED AT 10 PSIG)
6	4	2/0 AWG MAXIMUM GROUND LUGS
7	4	REMOVABLE OPERATING HANDLES
8	2	LIFTING EYES
9	4	9/16" DIAMETER MOUNTING PROVISIONS FOR SWITCH
10	0	200 AMP DEEPWELL BUSHINGS
11	12	600 AMP BUSHINGS
12	1	304L STAINLESS STEEL SWITCH TANK WITH ASA #70 LIGHT GRAY FINISH
13	12	BUSHING PROTECTIVE SHIPPING CAPS
14	4	MOTOR OPERATOR PROVISION
15		
16		
17		
18		
19		
20		
21		
22		
23		
24		
25		
26		
27		

SWITCH RATINGS	
MAXIMUM DESIGN VOLTAGE	15.5 kV
BIL IMPULSE WITHSTAND	95 kV
AC ONE MINUTE WITHSTAND	35 kV
DC FIFTEEN MINUTE WITHSTAND	66 kV
CORONA EXTINCTION AT 3 PC SENSITIVITY	11 kV
OPEN GAP BIL IMPULSE WITHSTAND **	200 kV
LOAD INTERRUPTING AND LOOP SWITCHING	600 A
MAGNETIZING CURRENT SWITCHING	25 A
CAPACITIVE CURRENT SWITCHING	40 A
CONTINUOUS CURRENT *	600 A
EIGHT HOUR OVERLOAD CURRENT *	900 A
ASYMMETRICAL MOMENTARY AND THREE SHOT FAULT CLOSE *	22.5 kA
SYMMETRICAL ONE SECOND RATING *	15 kA
NORMAL OPERATING PRESSURE RANGE (PSIG)	2 - 15
OVERLOAD INTERRUPTING CAPACITY	3000 A
MECHANICAL LIFE OPERATIONS	2000
CORROSION RESISTANCE PER ASTM-B-117-54 (HOURS)	2000
MAXIMUM GAS LEAKAGE (cc/SECOND)	10 ⁻⁷

SPECIFICATIONS	
SWITCH PER ANSI C37.71	
BUSHINGS PER ANSI/IEEE 386	
COMMERCIAL GRADE SF6 GAS PER ASTM D-2472	

* WHEN 200 AMP ELBOWS ARE USED, THE CONTINUOUS CURRENT, OVERLOAD, MOMENTARY AND ONE SECOND RATINGS WILL BE REDUCED. TYPICALLY, 200 AMP ACCESSORIES ARE RATED 200 AMP CONTINUOUS, 300 AMP EIGHT HOUR OVERLOAD, 15 kA ASYMMETRICAL MOMENTARY AND 10 kA SYMMETRICAL FOR 1/2 SECOND.
 ** WITH TANK AND ADJACENT PHASES FLOATING



PUFFER PAK® LOAD BREAK SWITCH

<p>600A. 600A. 600A. 600A.</p> <p>LINE DIAGRAM AND BUSHING TYPE</p>	<p>CATALOG NO. TG6-44-15/SV MODEL NO. 6666/OP WEIGHT: 525 lbs. REQ'D. MANHOLE OPENING: 42" DIA.</p>
<p>SUBSURFACE SF6 SWITCH 3-PHASE, 4-WAY WITH 4-SWITCHED WAYS RATED 15.5 kV, 600 AMP, 22.5 kA ASYM</p>	<p>CANADA POWER PRODUCTS CORP. CPP # 801C724 DATE _____ REV/ECN # _____ DRAWN _____ ENGINEER _____ DATE _____</p> <p>QUOTE <input type="checkbox"/> APPROVAL <input type="checkbox"/> PRODUCTION <input checked="" type="checkbox"/></p>