

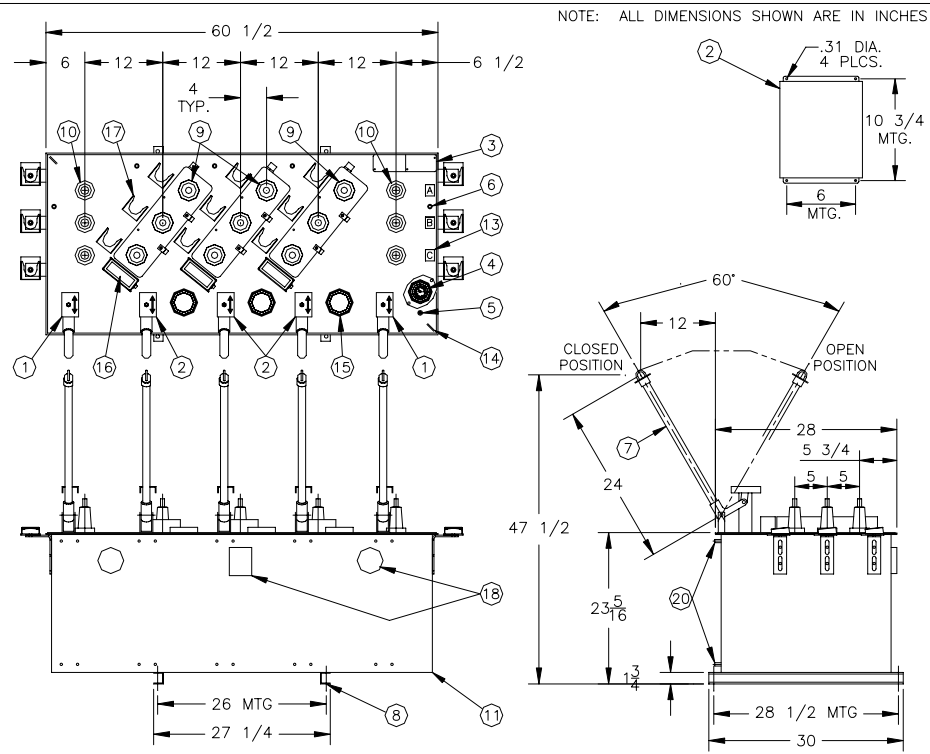
COMPONENT IDENTIFICATION		
ITEM	QTY	DESCRIPTION
1	2	CLOSED-OPEN POSITION INDICATORS WITH PADLOCK PROVISIONS
2	3	CLOSE-OPEN POSITION INDICATORS WITH PADLOCK PROVISIONS, PROGRAMMABLE CONTROL BOX, 25 ft. OF CABLE & 3 CT'S FOR EACH RFI WAY
3	1	NAMEPLATE WITH RATINGS AND LINE DIAGRAM
4	1	COLOR CODED PRESSURE GAUGE
5	1	SF6 FILL VALVE (SWITCH FACTORY FILLED AT 10 PSIG)
6	5	2/0 AWG MAXIMUM GROUND LUGS
7	5	REMOVABLE OPERATING HANDLES
8	4	9/16" DIAMETER MOUNTING PROVISIONS FOR SWITCH
9	9	200 AMP DEEPWELL BUSHINGS
10	6	600 AMP BUSHINGS
11	1	304L STAINLESS STEEL SWITCH TANK WITH ASA #70 LIGHT GRAY FINISH
12	15	BUSHING PROTECTIVE SHIPPING CAPS
13	3	PHASE IDENTIFICATION TAGS
14	2	LIFTING EYES
15	3	WINDOW FOR RFI CLOSE-OPEN POSITION INDICATOR
16	3	CAUTION LABEL
17	15	PARKING STAND
18	2	WINDOWS FOR VISIBLE BREAK AND POSITION INDICATING PLAQUE
19	5	PROVISION FOR MOTOR OPERATORS (STUDS ONLY)
20		
21		
22		
23		
24		
25		
26		

RATINGS		SWITCH	RFI	SPECIFICATIONS
MAXIMUM DESIGN VOLTAGE		27 kV	27 kV	
BIL IMPULSE WITHSTAND		125 kV	125 kV	
AC ONE MINUTE WITHSTAND		60 kV	40 kV	
DC FIFTEEN MINUTE WITHSTAND		96 kV	78 kV	
CORONA EXTINCTION		19 kV	19 kV	
OPEN GAP BIL IMPULSE WITHSTAND **		200 kV	125 kV	
LOAD INTERRUPTING AND LOOP SWITCHING		600 A	600 A	
MAGNETIZING CURRENT SWITCHING		25 A	21 A	
CAPACITIVE CURRENT SWITCHING		40 A	25 A	
CONTINUOUS CURRENT *		600 A	600 A	
EIGHT HOUR OVERLOAD CURRENT *		900 A	900 A	
ASYMMETRICAL MOMENTARY AND THREE SHOT FAULT CLOSE *		22.5 kA	19.2 kA	
SYMMETRICAL ONE SECOND RATING *		15 kA	12 kA	
OVERLOAD INTERRUPTING CAPACITY		2500 A	12 kA	
MECHANICAL LIFE OPERATIONS		2000	2000	

APPLICATION INFORMATION		
CORROSION RESISTANCE PER ASTM-B-117-54 (HOURS)		2000
MAXIMUM GAS LEAKAGE (cc/SECOND)		10 ⁻⁷
NORMAL OPERATING PRESSURE RANGE (PSIG)		2 - 15

* WHEN 200 AMP ELBOWS ARE USED, THE CONTINUOUS CURRENT, OVERLOAD, MOMENTARY AND ONE SECOND RATINGS WILL BE REDUCED. TYPICALLY, 200 AMP ACCESSORIES ARE RATED 200 AMP CONTINUOUS, 300 AMP EIGHT HOUR OVERLOAD, 15 kA ASYMMETRICAL MOMENTARY AND 10 kA SYMMETRICAL FOR 1/2 SECOND.

** WITH TANK AND ADJACENT PHASES FLOATING



PUFFER PAK® LOAD BREAK SWITCH/RFI

<p>LINE DIAGRAM AND BUSHING TYPE</p> <p>27 kV, SUBSURFACE SF6 SWITCH/RFI</p> <p>3-PHASE, 5-WAY WITH 2-SWITCHED WAYS AND 3-FAULT INTERRUPTING WAYS</p>	<p>600A. 200A. 200A. 200A. 600A.</p> <p>CATALOG NO. SRG6-55-27 MODEL NO. 6TTT6/752 WEIGHT : 900 lbs. REQ'D. MANHOLE OPENING : 42" DIA.</p>
---	---

CANADA POWER PRODUCTS CORP.

CPP # 801C1309 DATE 20JUN00
 REV/ECN # _____ DRAWN RVS
 ENGINEER _____ DATE _____

QUOTE APPROVAL PRODUCTION