

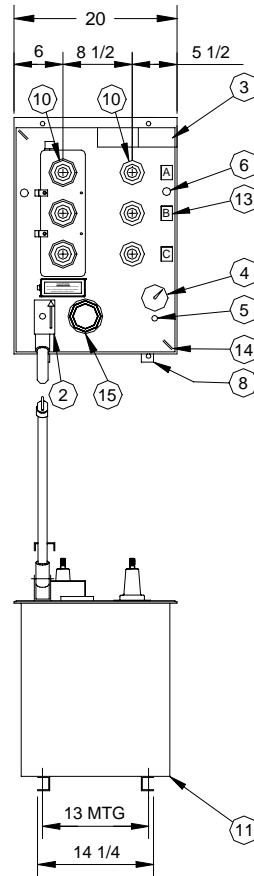
### COMPONENT IDENTIFICATION

ITEM	QTY	DESCRIPTION
1	0	CLOSED-OPEN POSITION INDICATORS WITH PADLOCK PROVISIONS
2	1	PADLOCKABLE OPERATING PROVISIONS, WITH PROGRAMMABLE CONTROL BOX, 25 FT. OF CABLE & 3 CT'S FOR EACH RFI WAY
3	1	NAMEPLATE WITH RATINGS AND LINE DIAGRAM
4	1	COLOR CODED PRESSURE GAUGE
5	1	SF6 FILL VALVE (SWITCH FACTORY FILLED AT 10 PSIG)
6	2	2/0 AWG MAXIMUM GROUND LUGS
7	1	REMOVABLE OPERATING HANDLES
8	4	9/16" DIAMETER MOUNTING PROVISIONS FOR SWITCH
9	0	200 AMP DEEPWELL BUSHINGS
10	6	600 AMP BUSHINGS
11	1	STAINLESS STEEL SWITCH TANK WITH ASA #70 LIGHT GRAY
12	6	BUSHING PROTECTIVE SHIPPING CAPS
13	3	PHASE IDENTIFICATION TAGS
14	2	LIFTING EYES
15	1	WINDOW FOR RFI CLOSED-OPEN POSITION INDICATOR
16		
17		
18		
19		
20		
21		
22		
23		
24		
25		
26		

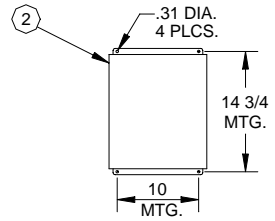
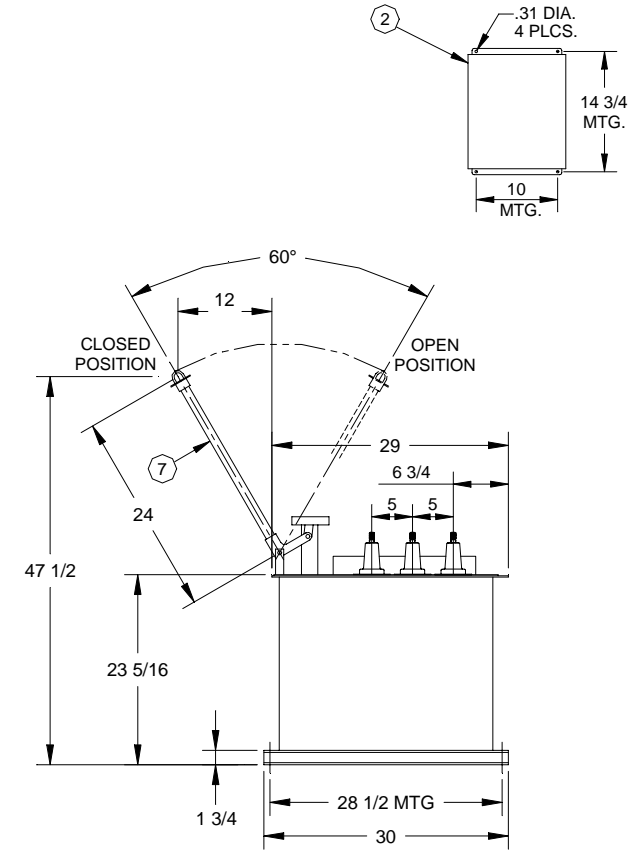
RATINGS		SWITCH	RFI	SPECIFICATIONS
MAXIMUM DESIGN VOLTAGE	15.5 kV	15.5 kV		SWITCH PER ANSI C37.71
BIL IMPULSE WITHSTAND	95 kV	95 kV		
AC ONE MINUTE WITHSTAND	35 kV	35 kV		
DC FIFTEEN MINUTE WITHSTAND	66 kV	53 kV		BUSHINGS PER ANSI/IEEE 386
CORONA EXTINCTION AT 3 PC SENSITIVITY	11 kV	11 kV		
OPEN GAP BIL IMPULSE WITHSTAND **	200 kV	95 kV		
LOAD INTERRUPTING AND LOOP SWITCHING	600 A	600 A		RFI PER APPLICABLE PORTIONS OF ANSI C37.60 AND C37.71
MAGNETIZING CURRENT SWITCHING	25 A	25 A		
CAPACITIVE CURRENT SWITCHING	40 A	40 A		
CONTINUOUS CURRENT *	600 A	600 A		COMMERCIAL GRADE SF6 GAS PER ASTM D-2472
EIGHT HOUR OVERLOAD CURRENT *	900 A	900 A		
ASYMMETRICAL MOMENTARY AND THREE SHOT FAULT CLOSE *	22.5 kA	19.2 kA		
SYMMETRICAL ONE SECOND RATING *	15 kA	12 kA		
OVERLOAD INTERRUPTING CAPACITY	3000 A	12000 A		
MECHANICAL LIFE OPERATIONS	2000	2000		
APPLICATION INFORMATION				
CORROSION RESISTANCE PER ASTM-B-117-54 (HOURS)		2000		
MAXIMUM GAS LEAKAGE (cc/SECOND)		10 <sup>-7</sup>		
NORMAL OPERATING PRESSURE RANGE (PSIG)		2 - 15		

\* WHEN 200 AMP ELBOWS ARE USED, THE CONTINUOUS CURRENT, OVERLOAD, MOMENTARY AND ONE SECOND RATINGS WILL BE REDUCED. TYPICALLY, 200 AMP ACCESSORIES ARE RATED 200 AMP CONTINUOUS, 300 AMP EIGHT HOUR OVERLOAD, 15 KA ASYMMETRICAL MOMENTARY AND 10 KA SYMMETRICAL FOR 1/2 SECOND.

\*\* WITH TANK AND ADJACENT PHASES FLOATING



NOTE: ALL DIMENSIONS SHOWN ARE IN INCHES



### PUFFER PAK® LOAD BREAK SWITCH/RFI

<p>600A. 600A.</p>	CATALOG NO. SRG6-21-15 MODEL NO. S6 WEIGHT : 210 lbs. REQ'D. MANHOLE OPENING : 32" DIA.
	CANADA POWER PRODUCTS CORP. CPP # _____ K86028      ITEM # _____ 1 REVISION _____      DATE _____ ENGINEER _____      DATE _____ QUOTE <input type="checkbox"/> APPROVAL <input checked="" type="checkbox"/> PRODUCTION <input type="checkbox"/>
15.5 kV, SUBSURFACE SF6 SWITCH/RFI 3-PHASE, 2-WAY WITH 1-TAPPED WAY AND 1-FAULT INTERRUPTING WAY	