

### COMPONENT IDENTIFICATION

| ITEM | QTY | DESCRIPTION   |
|------|-----|---|
| 1    | 4   | CLOSED-OPEN POSITION INDICATORS WITH PADLOCK PROVISIONS   |
| 2    | 3   | PHASE IDENTIFICATION TAGS                                 |
| 3    | 1   | NAMEPLATE WITH RATINGS AND LINE DIAGRAM                   |
| 4    | 1   | COLOR CODED PRESSURE GAUGE                                |
| 5    | 1   | SF6 FILL VALVE (SWITCH FACTORY FILLED AT 10 PSIG)         |
| 6    | 4   | 2/0 AWG MAXIMUM GROUND LUGS                               |
| 7    | 4   | REMOVABLE OPERATING HANDLES                               |
| 8    | 2   | LIFTING EYES  |
| 9    | 4   | 9/16" DIAMETER MOUNTING PROVISIONS FOR SWITCH             |
| 10   | 0   | 200 AMP DEEPWELL BUSHINGS                                 |
| 11   | 12  | 600 AMP BUSHINGS  |
| 12   | 1   | 304L STAINLESS STEEL SWITCH TANK WITH ASA #70 GRAY FINISH |
| 13   | 12  | BUSHING PROTECTIVE SHIPPING CAPS                          |
| 14   | 4   | MOTOR OPERATOR MOUNTING PROVISION (STUDS ONLY)            |
| 15   |     |   |
| 16   |     |   |
| 17   |     |   |
| 18   |     |   |
| 19   | 2   | WINDOWS FOR VISIBLE BREAK AND POSITION INDICATING PLAQUE  |
| 20   |     |   |
| 21   |     |   |
| 22   |     |   |
| 23   |     |   |
| 24   |     |   |
| 25   |     |   |
| 26   |     |   |
| 27   |     |   |

#### SWITCH RATINGS

|   |                  |
|---|------------------|
| MAXIMUM DESIGN VOLTAGE                              | 15.5 KV          |
| BIL IMPULSE WITHSTAND                               | 95 KV            |
| AC ONE MINUTE WITHSTAND                             | 35 KV            |
| DC FIFTEEN MINUTE WITHSTAND                         | 66 KV            |
| CORONA EXTINCTION AT 3 PC SENSITIVITY               | 11 KV            |
| OPEN GAP BIL IMPULSE WITHSTAND **                   | 200 KV           |
| LOAD INTERRUPTING AND LOOP SWITCHING                | 600 A            |
| MAGNETIZING CURRENT SWITCHING                       | 25 A             |
| CAPACITIVE CURRENT SWITCHING                        | 40 A             |
| CONTINUOUS CURRENT *                                | 600 A            |
| EIGHT HOUR OVERLOAD CURRENT *                       | 900 A            |
| ASYMMETRICAL MOMENTARY AND THREE SHOT FAULT CLOSE * | 22.5 KA          |
| SYMMETRICAL ONE SECOND RATING *                     | 15 KA            |
| 600 A. LOAD INTERRUPTING OPERATION ENDURANCE        | 1000             |
| OVERLOAD INTERRUPTING CAPACITY                      | 3000 A           |
| MECHANICAL LIFE OPERATIONS                          | 2000             |
| CORROSION RESISTANCE PER ASTM-B-117-54 (HOURS)      | 2000             |
| MAXIMUM GAS LEAKAGE (cc/SECOND)                     | 10 <sup>-7</sup> |
| NORMAL OPERATING PRESSURE RANGE (PSIG)              | 2 - 15           |

#### SPECIFICATIONS

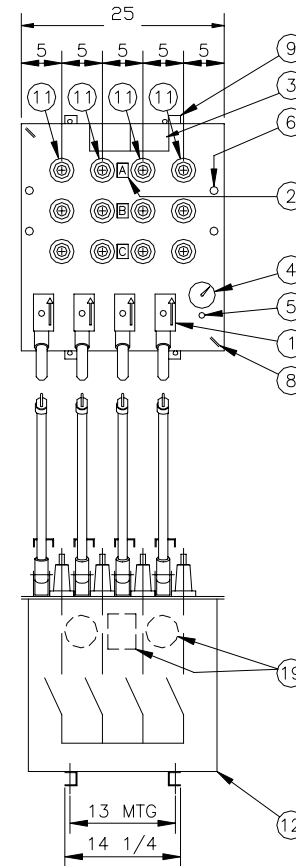
SWITCH PER ANSI C37.71

BUSHINGS PER ANSI/IEEE 386

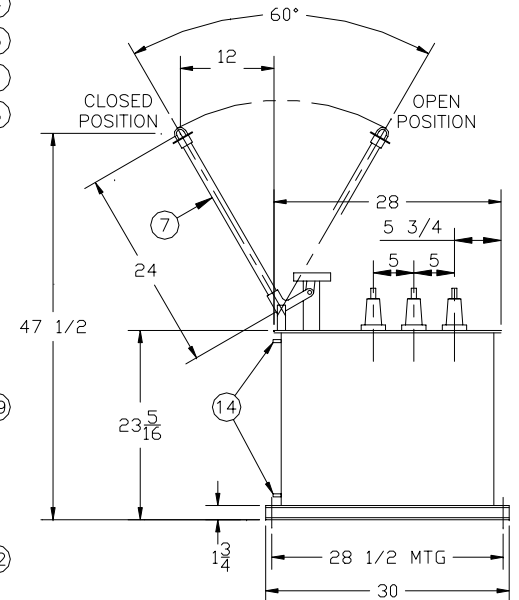
COMMERCIAL GRADE SF6 GAS PER ASTM D-2472

\* WHEN 200 AMP ELBOWS ARE USED, THE CONTINUOUS CURRENT, OVERLOAD, MOMENTARY AND ONE SECOND RATINGS WILL BE REDUCED. TYPICALLY, 200 AMP ACCESSORIES ARE RATED 200 AMP CONTINUOUS, 300 AMP EIGHT HOUR OVERLOAD, 15 KA ASYMMETRICAL MOMENTARY AND 10 KA SYMMETRICAL FOR 1/2 SECOND.

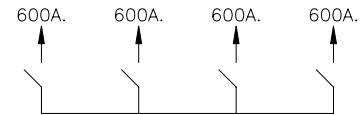
\*\* WITH TANK AND ADJACENT PHASES FLOATING



NOTE: ALL DIMENSIONS SHOWN ARE IN INCHES



## PUFFER PAK® LOAD BREAK SWITCH



LINE DIAGRAM AND BUSHING TYPE

SUBSURFACE SF6 SWITCH  
3 PHASE, 4 WAY WITH 4 SWITCHED WAY(S)  
RATED 15.5 KV, 600 AMP, 22.5 KA ASYM

CATALOG NO. SG6-44-15  
MODEL NO. 6666/VB  
WEIGHT 340 LBS.  
REQ'D. MANHOLE OPENING: 36" DIA.

### CANADA POWER PRODUCTS CORP.

CPP # 801C140      DATE 12MAY00  
REV/ECN # \_\_\_\_\_      DRAWN DH  
ENGINEER \_\_\_\_\_      DATE \_\_\_\_\_  
QUOTE     APPROVAL     PRODUCTION