

COMPONENT IDENTIFICATION

ITEM	QTY	DESCRIPTION
1	3	CLOSED-OPEN POSITION INDICATORS WITH PADLOCK PROVISIONS
2	3	PHASE IDENTIFICATION TAGS
3	1	NAMEPLATE WITH RATINGS AND LINE DIAGRAM
4	1	COLOR CODED PRESSURE GAUGE
5	1	SF6 FILL VALVE (SWITCH FACTORY FILLED AT 10 PSIG)
6	3	2/0 AWG MAXIMUM GROUND LUGS
7	3	REMOVABLE OPERATING HANDLES
8	2	LIFTING EYES
9	4	9/16" DIAMETER MOUNTING PROVISIONS FOR SWITCH
10	0	200 AMP DEEPWELL BUSHINGS
11	9	600 AMP BUSHINGS
12	1	304L STAINLESS STEEL SWITCH TANK WITH COAL TAR EPOXY FINISH
13	9	BUSHING PROTECTIVE SHIPPING CAPS
14	3	REMOTE OPERATOR PROVISION
15		
16		
17		
18		
19		
20		
21		
22		
23		
24		
25		
26		
27		

SWITCH RATINGS

MAXIMUM DESIGN VOLTAGE	15.5 KV
BIL IMPULSE WITHSTAND	95 KV
AC ONE MINUTE WITHSTAND	35 KV
DC FIFTEEN MINUTE WITHSTAND	66 KV
CORONA EXTINCTION AT 3 PC SENSITIVITY	11 KV
OPEN GAP BIL IMPULSE WITHSTAND **	200 KV
LOAD INTERRUPTING AND LOOP SWITCHING	600 A
MAGNETIZING CURRENT SWITCHING	25 A
CAPACITIVE CURRENT SWITCHING	40 A
CONTINUOUS CURRENT *	600 A
EIGHT HOUR OVERLOAD CURRENT *	900 A
ASYMMETRICAL MOMENTARY AND THREE SHOT FAULT CLOSE *	22.5 KA
SYMMETRICAL ONE SECOND RATING *	15 KA
NORMAL OPERATING PRESSURE RANGE (PSIG)	2 - 15
OVERLOAD INTERRUPTING CAPACITY	3000 A
MECHANICAL LIFE OPERATIONS	2000
CORROSION RESISTANCE PER ASTM-B-117-54 (HOURS)	2000
MAXIMUM GAS LEAKAGE (cc/SECOND)	10 ⁻⁷

* WHEN 200 AMP ELBOWS ARE USED, THE CONTINUOUS CURRENT, OVERLOAD, MOMENTARY AND ONE SECOND RATINGS WILL BE REDUCED. TYPICALLY, 200 AMP ACCESSORIES ARE RATED 200 AMP CONTINUOUS, 300 AMP EIGHT HOUR OVERLOAD, 15 KA ASYMMETRICAL MOMENTARY AND 10 KA SYMMETRICAL FOR 1/2 SECOND.
 ** WITH TANK AND ADJACENT PHASES FLOATING

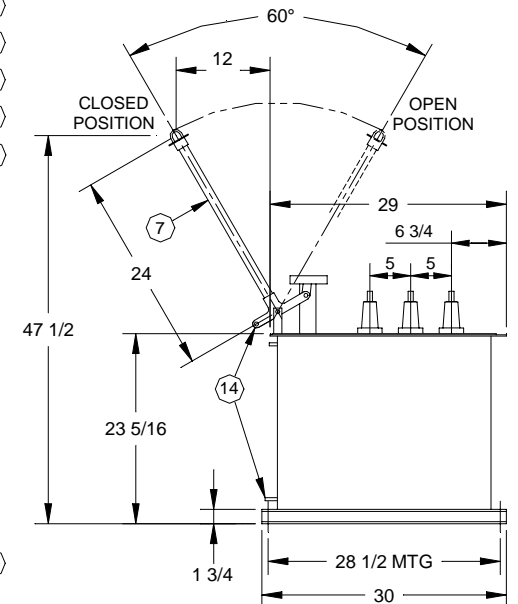
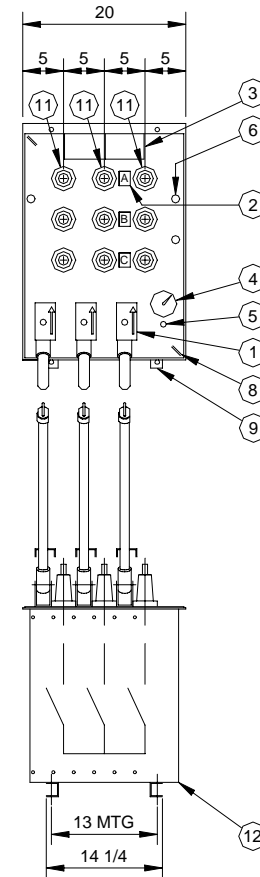
SPECIFICATIONS

SWITCH PER ANSI C37.71

 BUSHINGS PER ANSI/IEEE 386

 COMMERCIAL GRADE SF6 GAS PER ASTM D-2472

NOTE: ALL DIMENSIONS SHOWN ARE IN INCHES



PUFFER PAK[®] LOAD BREAK SWITCH

600A. 600A. 600A.

LINE DIAGRAM AND BUSHING TYPE

SUBSURFACE SF6 SWITCH
 3-PHASE, 3-WAY WITH 3-SWITCHED WAYS
 RATED 15.5 kV, 600 AMP, 22.5 kA ASYM

CATALOG NO. SG6-33-15
 MODEL NO. 666/OP
 WEIGHT: 260 lbs.
 REQ'D. MANHOLE OPENING: 32" DIA.

CANADA POWER PRODUCTS CORP.

CPP # 801C755 DATE 25JAN99
 REV/ECN # _____ DRAWN RVS
 ENGINEER _____ DATE _____

QUOTE APPROVAL PRODUCTION