

COMPONENT IDENTIFICATION

ITEM	QTY	DESCRIPTION
1	5	CLOSED-OPEN POSITION INDICATORS WITH PADLOCK PROVISIONS
2	3	PHASE IDENTIFICATION TAGS
3	1	NAMEPLATE WITH RATINGS AND LINE DIAGRAM
4	1	COLOR CODED PRESSURE GAUGE
5	1	SF6 FILL VALVE (SWITCH FACTORY FILLED AT 10 PSIG)
6	5	4/0 AWG GROUND LUGS
7	1	REMOVABLE OPERATING HANDLE WITH ADJUSTABLE ADAPTER & STORAGE PROVISION
8	4	LIFTING EYES FOR SWITCH
9	1	GALVANIZED SWITCH FRAME WITH (6) 7/16 DIA MOUNTING PROVISIONS
10	0	200 AMP DEEPWELL BUSHINGS WITH PROTECTIVE SHIPPING CAPS
11	15	600 AMP BUSHINGS WITH PROTECTIVE SHIPPING CAPS
12	1	304L STAINLESS STEEL SWITCH TANK WITH ASA #70 LIGHT GRAY FINISH
13	2	ENCLOSURE GROUNDING PROVISION WITH 9/16" DIAMETER HOLES

14	1	REMOVABLE PADMOUNT STAINLESS STEEL ENCLOSURE WITH DOUBLE DOORS AND HINGED TOP. INCLUDES (4) 5/8" DIAMETER MOUNTING BRACKETS, (4) REMOVABLE LIFTING BRACKETS, 3 POINT LATCH, PENTAHEAD BOLT AND OPENING STAYS FOR DOORS AND TOP.
15	5	WINDOWS FOR VISIBLE BREAK AND POSITION INDICATING PLAQUE
16		
17		
18	5	MOTOR OPERATOR MOUNTING PROVISIONS (STUDS ONLY)
19		
20		
21		
22		
23		
24		
25		
26		
27		
28		
29		

SWITCH RATINGS

MAXIMUM DESIGN VOLTAGE	15.5 kV
BIL IMPULSE WITHSTAND	110 kV
AC ONE MINUTE WITHSTAND	35 kV
DC FIFTEEN MINUTE WITHSTAND	66 kV
CORONA EXTINGUISH AT 3 PC SENSITIVITY	11 kV
OPEN GAP BIL IMPULSE WITHSTAND **	200 kV
LOAD INTERRUPTING AND LOOP SWITCHING	600 A
MAGNETIZING CURRENT SWITCHING	25 A
CAPACITIVE CURRENT SWITCHING	40 A
CONTINUOUS CURRENT *	600 A
EIGHT HOUR OVERLOAD CURRENT *	900 A
ASYMMETRICAL MOMENTARY AND THREE SHOT FAULT CLOSE *	40 KA
SYMMETRICAL ONE SECOND RATING *	25 KA
NORMAL OPERATING PRESSURE RANGE (PSIG)	2 - 15
OVERLOAD INTERRUPTING CAPACITY	3000 A
MECHANICAL LIFE OPERATIONS	2000
CORROSION RESISTANCE PER ASTM-B-117-54 (HOURS)	2000
MAXIMUM GAS LEAKAGE (cc/SECOND)	10 ⁻⁷

SPECIFICATIONS

SWITCH PER ANSI C37.71 AND ANSI C37.72

BUSHINGS PER ANSI/IEEE 386

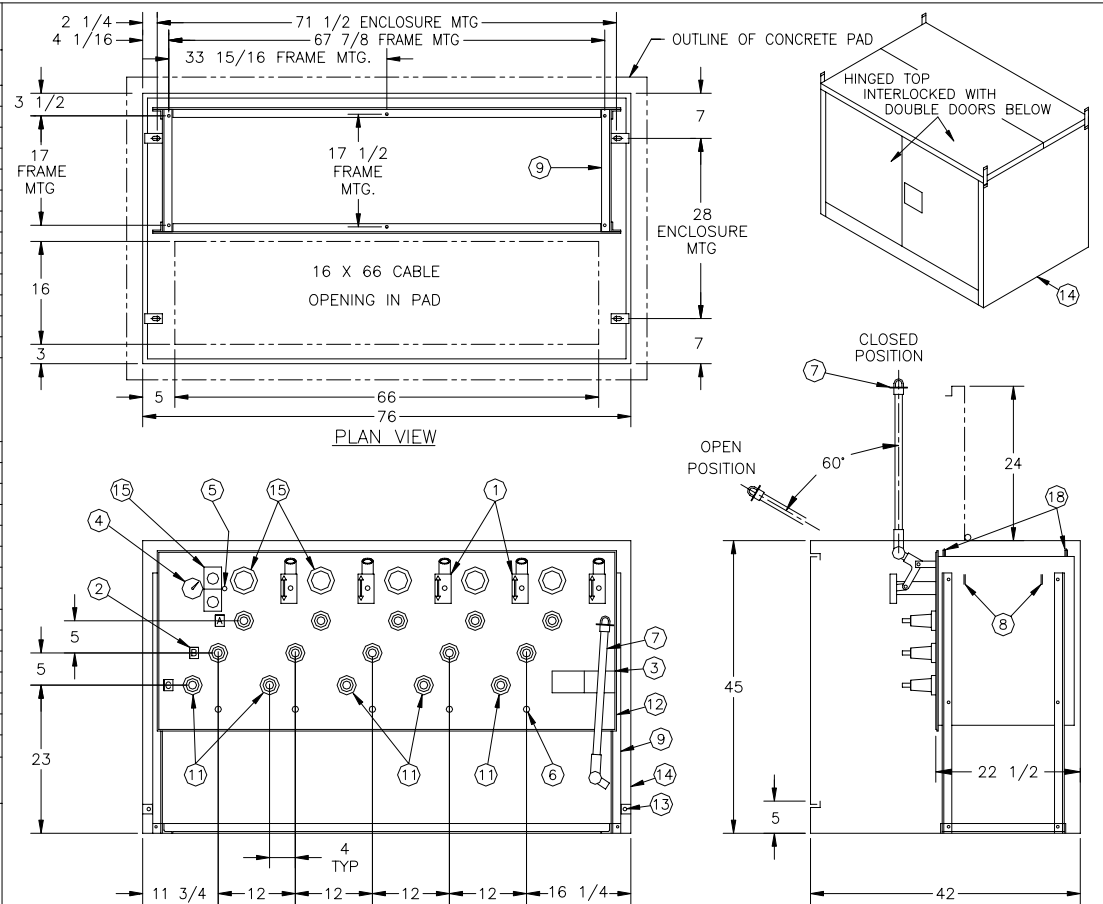
COMMERCIAL GRADE SF6 GAS PER ASTM D-2472

12 GAUGE STAINLESS STEEL, TAMPER RESISTANT PADMOUNT ENCLOSURE PER ANSI C37.72 & ANSI C57.12.28 PAINTED GREEN (7 GY 3.29/1.5) WITH STAINLESS STEEL HARDWARE

* WHEN 200 AMP ELBOWS ARE USED, THE CONTINUOUS CURRENT, OVERLOAD, MOMENTARY AND ONE SECOND RATINGS WILL BE REDUCED. TYPICALLY, 200 AMP ACCESSORIES ARE RATED 200 AMP CONTINUOUS, 300 AMP EIGHT HOUR OVERLOAD, 15 KA ASYMMETRICAL MOMENTARY AND 10 KA SYMMETRICAL FOR 1/2 SECOND.

** WITH TANK AND ADJACENT PHASES FLOATING

NOTE:
ALL DIMENSIONS SHOWN ARE IN INCHES



PUFFER PAK® LOAD BREAK SWITCH



LINE DIAGRAM AND BUSHING TYPE

PADMOUNT SF6 SWITCH
3-PHASE, 5-WAY WITH 5-SWITCHED WAYS
RATED 15.5 kV, 600 AMP, 40 KA ASYM

CATALOG NO. PG6-55-15/110/40
MODEL NO. 66666/718
WEIGHT: 1,400 lbs.

CANADA POWER PRODUCTS CORP.

CPP # 801C1205 DATE 14OCT99
REV/ECN # _____ DRAWN DH
ENGINEER _____ DATE _____
QUOTE APPROVAL PRODUCTION