

COMPONENT IDENTIFICATION

ITEM	QTY	DESCRIPTION
1	4	CLOSED-OPEN POSITION INDICATORS WITH PADLOCK PROVISIONS
2	3	PHASE IDENTIFICATION TAGS
3	1	NAMEPLATE WITH RATINGS AND LINE DIAGRAM
4	1	COLOR CODED PRESSURE GAUGE
5	1	SF6 FILL VALVE (SWITCH FACTORY FILLED AT 10 PSIG)
6	4	2/0 AWG MAXIMUM GROUND LUGS
7	1	REMOVABLE OPERATING HANDLE WITH ADJUSTABLE ADAPTER & STORAGE PROVISION
8	4	LIFTING EYES FOR SWITCH
9	1	GALVANIZED SWITCH FRAME WITH (4) 7/16 DIA MOUNTING PROVISIONS
10	0	200 AMP DEEPWELL BUSHINGS WITH PROTECTIVE SHIPPING CAPS
11	12	600 AMP BUSHINGS WITH PROTECTIVE SHIPPING CAPS
12	1	STAINLESS STEEL SWITCH TANK WITH ASA #70 LIGHT GRAY FINISH
13	2	ENCLOSURE GROUNDING PROVISION WITH 9/16" DIAMETER HOLES
14	1	REMOVABLE PADMOUNT ENCLOSURE WITH DOUBLE DOORS AND HINGED TOP. INCLUDES (4) 5/8" DIAMETER MOUNTING BRACKETS, (4) REMOVABLE LIFTING BRACKETS, 3 POINT LATCH, PENTAHEAD BOLT AND OPENING STAYS FOR DOORS AND TOP.
15		
16		
17		
18		
19		
20		
21		
22		
23		
24		
25		
26		
27		
28		
29		

SWITCH RATINGS

MAXIMUM DESIGN VOLTAGE	15.5 kV
BIL IMPULSE WITHSTAND	95 kV
AC ONE MINUTE WITHSTAND	35 kV
DC FIFTEEN MINUTE WITHSTAND	66 kV
CORONA EXTINCTION AT 3 PC SENSITIVITY	11 kV
OPEN GAP BIL IMPULSE WITHSTAND **	200 kV
LOAD INTERRUPTING AND LOOP SWITCHING	600 A
MAGNETIZING CURRENT SWITCHING	25 A
CAPACITIVE CURRENT SWITCHING	40 A
CONTINUOUS CURRENT *	600 A
EIGHT HOUR OVERLOAD CURRENT *	900 A
ASYMMETRICAL MOMENTARY AND THREE SHOT FAULT CLOSE *	22.5 kA
SYMMETRICAL ONE SECOND RATING *	15 kA
NORMAL OPERATING PRESSURE RANGE (PSIG)	2 - 15
OVERLOAD INTERRUPTING CAPACITY	3000 A
MECHANICAL LIFE OPERATIONS	2000
CORROSION RESISTANCE PER ASTM-B-117-54 (HOURS)	2000
MAXIMUM GAS LEAKAGE (cc/SECOND)	10 ⁻⁷

SPECIFICATIONS

SWITCH PER ANSI C37.71 AND ANSI C37.72

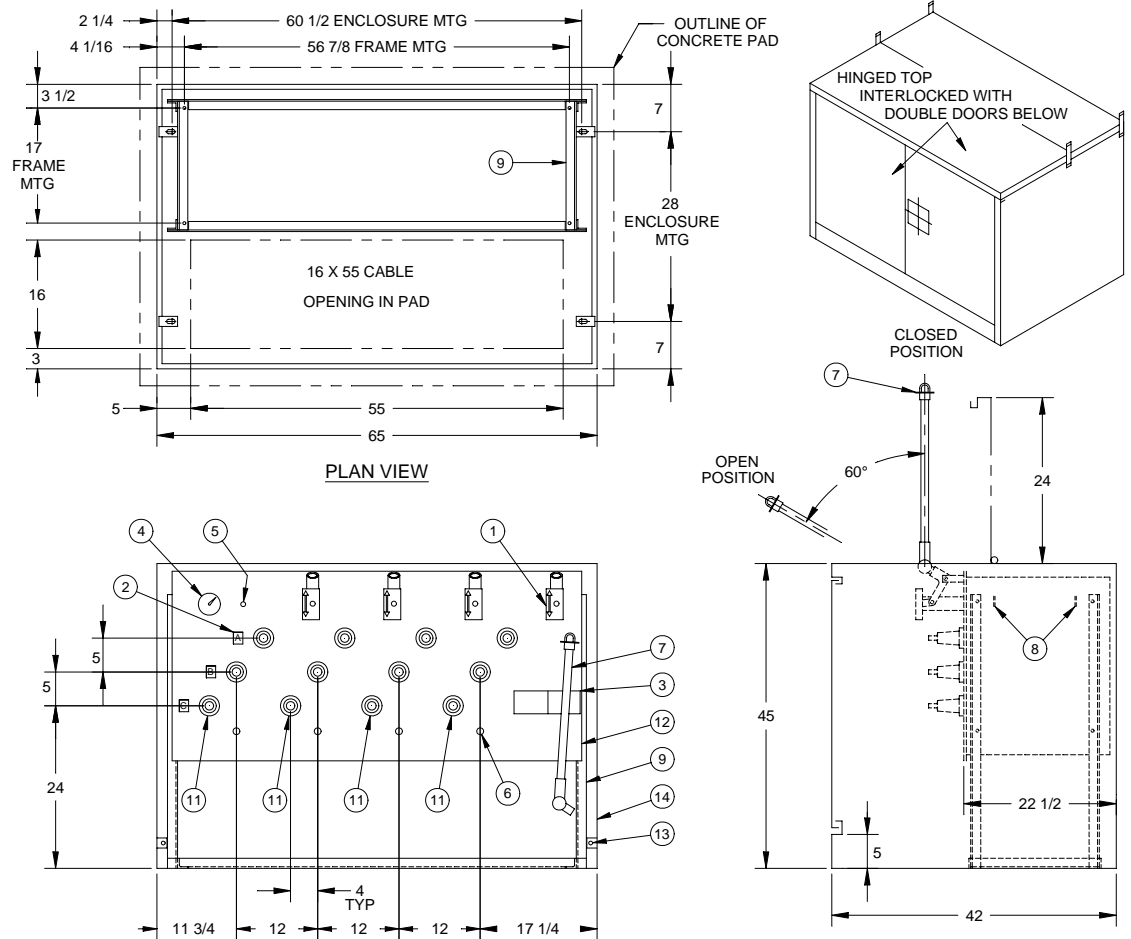
BUSHINGS PER ANSI/IEEE 386

COMMERCIAL GRADE SF6 GAS PER ASTM D-2472

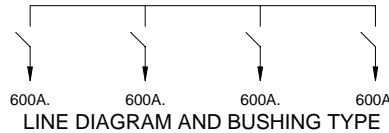
12 GAUGE MILD STEEL, TAMPER RESISTANT PADMOUNT ENCLOSURE PER ANSI C37.72 & ANSI C57.12.28 PAINTED GREEN (7 GY 3.29/1.5) WITH STAINLESS STEEL HARDWARE

* WHEN 200 AMP ELBOWS ARE USED, THE CONTINUOUS CURRENT, OVERLOAD, MOMENTARY AND ONE SECOND RATINGS WILL BE REDUCED. TYPICALLY, 200 AMP ACCESSORIES ARE RATED 200 AMP CONTINUOUS, 300 AMP EIGHT HOUR OVERLOAD, 15 kA ASYMMETRICAL MOMENTARY AND 10 kA SYMMETRICAL FOR 1/2 SECOND.

** WITH TANK AND ADJACENT PHASES FLOATING



PUFFER PAK[®] LOAD BREAK SWITCH



PADMOUNT SF6 SWITCH
3 PHASE, 4 WAY WITH 4 SWITCHED WAY(S)
RATED 15.5kV, 600 AMP, 22.5kA ASYM

CATALOG NO. PG6- 44-15
MODEL NO. 6666
WEIGHT 1,125 LBS.

CANADA POWER PRODUCTS CORP.

CPP# K68194 ITEM # 1
REVISION 1 DATE 29JAN97
ENGINEER _____ DATE _____

QUOTE APPROVAL PRODUCTION

NOTE:
ALL DIMENSIONS SHOWN ARE IN INCHES